



High Quality Woodcare Products
Industrial Finishes



E650 / Dedicated for engineered parquet

PRODUCT DESCRIPTION

A waterborne ready-to-use putty. Very flexible product and easy application. Easy to sand, it does not clog the abrasive paper. Very smooth and very dense, ages without darkening the wood. After putty application, the final product is just as wood so can perfectly be sawn, sanded, tinted, waxed, varnished and even nailed.

RANGE OF APPLICATION

For the industrial filling of slots, small holes and imperfections up to 5 mm.

PACKAGING

7 kg / 25 kg / 310 kg

SHELF-LIFE

1 year in closed original packaging. Store away from frost.

WAREHOUSING

At 10 - 40 °C

CLEANING

Water

TECHNICAL DATA

Extra component:	-
Mixing ratio:	Ready to use
Hardness Shore D:	55
Pot-life:	-
Density:	1,20
Viscosity mPas:	100.000 to 140.000 (spindle7; speed10)
Colors:	8 colors
Sanding:	20 min
Solid content:	-
Gloss:	-
Thinner:	-
Coverage per coat:	-
Coverage USA per coat:	-
Drying:	Fully dry after 8 hours. [21 °C; 50% HR; 5 mm]

PROTECTION

You can cover the putty with any type of finish (oil, varnish, paint, etc.)

IMPORTANT INFORMATION

It is advisable to use the putty at temperatures above 12 °C.

APPLICATION

Preparation substrate:

Dry, clean, non-greasy wood. Dusting beforehand recommended.

Processing:

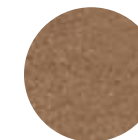
- Choose the putty color that comes closest to the desired final color.
- Fill up the small holes and cracks by smoothening in a single operation.
- When dry, sand lightly to get a perfect finish.
- By it's texture and it's rheology, the putty can be applied using an extrusion gun.



WHITE



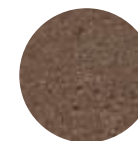
PINE



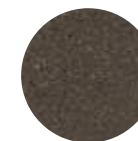
DOUGLAS



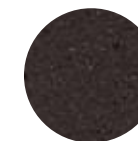
BROWN



SP300



BROWN DARK



MOKA



BLACK PURE

E2016 / Dedicated for automatic lines

PRODUCT DESCRIPTION

A waterbased single-component, ready-to-use putty that is completely odourless. This strong adherence product allows you to finish finely, with high hardness and without the texture shrinking after applying. Thanks to being so flexible and easy-to-apply, it is easy to sand so does not clog sanding paper. It is still unique thanks to the fact it ages without blackening the wood. After putty application, the final product is just as wood so can perfectly be sawn, sanded, tinted, waxed, varnished and even nailed. Can be used for both interior and exterior use if well finished.

RANGE OF APPLICATION

For the industrial filling and reparation of holes and imperfections up to 20 mm. Suitable for all types of wood: Parquet, Cladding, Carpentry.

PACKAGING

7 kg / 25 kg / 310 kg

SHELF-LIFE

1 year in closed original packaging. Store away from frost.

WAREHOUSING

At 10 - 40 °C

TECHNICAL DATA

Extra component:	-
Mixing ratio:	Ready to use
Hardness Shore D:	55
Pot-life:	-
Density:	1,40
Viscosity mPas:	85.000 to 105.000 (spindle7; speed10)
Colors:	8
Sanding:	30 min
Solid content:	-
Gloss:	-
Thinner:	-
Coverage per coat:	-
Coverage USA per coat:	-
Drying:	Fully dry after 8 hours (21 °C; 50% HR; 20 mm)

PROTECTION

You can cover the putty with any type of finish (oil, varnish, paint, etc.)

IMPORTANT INFORMATION

- It is advisable to use the putty at temperatures above 12 °C.



WHITE



POPLAR



CLEAR WOOD



BLOND WOOD



DOUGLAS



BROWN



VERY DARK WOOD



BLACK



APPLICATION

Preparation substrate:

Dry, clean, non-greasy wood.
Dusting beforehand recommended.

Processing:

- Choose the putty color that comes closest to the desired final color.
- Fill up the small holes and cracks by smoothening in a single operation.
- When dry, sand lightly to get a perfect finish.
- By it's texture and it's rheology, the putty can be applied using an extrusion gun.

OUR MACHINE PARTNERS FOR INDUSTRIAL APPLICATION



TRADITIONAL PUTTY / Dedicated for veneer

PRODUCT DESCRIPTION

As a very smooth and very dense putty, the TRADITIONAL WOOD MASTIC® provides beautiful finishes, smooth surfaces without leaving marks or clogging. After putty application, the final product is just like wood so can perfectly be sawn, sanded, tinted, waxed, varnished and even nailed. It ages without darkening the wood, is available in several colors.

RANGE OF APPLICATION

For the manual filling and reparation of holes and imperfections up to 1 mm. Suitable for veneer, furniture, woodwork

SHELF-LIFE

1 year in closed original packaging. Store away from frost.

WAREHOUSING

At 10 - 40 °C

CLEANING

Immediately clean after use with water.

PROTECTION

You can cover the putty with any type of finish (oil, varnish, paint, etc.)

IMPORTANT INFORMATION

it is advisable to use the putty at temperatures above 12 °C.

APPLICATION

Preparation substrate:

Make sure before application that the surface is clean and dry. Dusting beforehand recommended.

Processing:

- Choose the color of TRADITIONAL WOOD MASTIC® that comes closest to the desired final color.
- Knead the dough with a spatula and then fill up and smooth in one operation. Below 15 °C, if the TRADITIONAL WOOD MASTIC® is too hard, slightly warm in a water-bath.

APPLICATION MATERIAL



TECHNICAL DATA

Extra component:	-
Mixing ratio:	Ready to use
Hardness Shore D:	70
Pot-life:	-
Density:	2,5
Viscosity mPas:	500.000 (spindle7; speed5)
Colors:	12 colors
Sanding:	15 min
Solid content:	-
Gloss:	-
Thinner:	-
Coverage per coat:	-
Coverage USA per coat:	-
Drying:	Fully dry after 4 hours (21 °C; 50% HR; 1 mm)



WHITE



PINE



CLEAR WOOD



MEDIUM WOOD



DARK WOOD



WENGE



WALNUT



PARQUET



OKOUME



CHERRY



SIPO



MAHOGANY

Wood Mastic®

E800 / Dedicated for Plywood

PRODUCT DESCRIPTION

Waterbased and ready-to-use filler for the filling of slots, small holes and little imperfections up to 1 mm. Suitable for all types of wood, and is particularly used for plywood and frames. WOOD MASTIC® E800 allows a hard and very fine finish with good adhesion and does not clog. In sum, a very flexible product, easy to apply and sand.

RANGE OF APPLICATION

For the manual or industrial filling and reparation of holes and imperfections up to 1 mm. Suitable for all types of wood particularly for plywood and frames.

SHELF-LIFE

1 year in closed original packaging. Store away from frost.

WAREHOUSING

At 10 - 40 °C

CLEANING

Immediately clean after use with water.

TECHNICAL DATA

Extra component:	-
Mixing ratio:	Ready to use
Hardness Shore D:	44
Pot-life:	-
Density:	1,60
Viscosity mPas:	100.000 to 150.000 (spindle7; speed10)
Colors:	17 colors
Sanding:	30 min
Solid content:	-
Gloss:	-
Thinner:	-
Coverage per coat:	-
Coverage USA per coat:	-
Drying:	Fully dry after 1h30 hours (21 °C; 50% HR; 1 mm)

PROTECTION

You can cover the putty with any type of finish (oil, varnish, paint, etc.).

IMPORTANT INFORMATION

- It is advisable to use the putty at temperatures above 12 °C.

APPLICATION

Preparation substrate:

Make sure before application that the surface is clean and dry. Dusting beforehand recommended.

Processing:

- Choose the WOOD MASTIC® E800 color that comes closest to the desired final color.
- When dry, lightly sand the surface before covering with a finish.
- Fill up the small holes and cracks by smoothening in a single operation.
- By it's texture and it's rheology, the WOOD MASTIC® E800 can be applied using an extrusion gun.

APPLICATION MATERIAL



WHITE



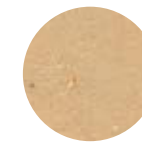
CLEAR WOOD



PINE



OAK



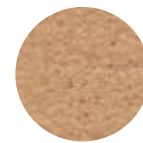
N°4



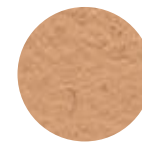
BLOND WOOD



OAK MEDIUM



EXOTIC WOOD



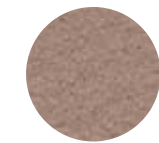
OKOUME



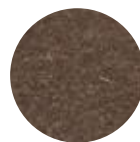
DOUGLAS



DARK OKOUME



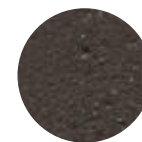
DARK WOOD



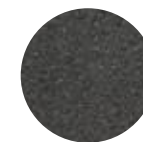
N°8



VERY DARK WOOD



N°12



WENGE



BLACK

BI POWDER / Suitable for all types of wood

PRODUCT DESCRIPTION

This odorless, 2-component putty is to be mixed with water and is therefore very environment-friendly compared to other types of putties. The product comes in powder and delivers you 30% extra volume once mixed. This fast-curing product can fill gaps up to 2 cm. While the WOOD MASTIC® BI has very good adhesion and hardness properties, it is still easy to sand and will not clog sanding paper. After putty application, the final product is just like wood so can perfectly be sawn, sanded, tinted, waxed, varnished and even nailed. Can be used for both interior and exterior use if well finished.

RANGE OF APPLICATION

Re-sealing large holes and finishing cracks and imperfections. Suitable for all types of wood: parquet, paneling, carpentry, furniture, panels.

PACKAGING

5 kg - 20 kg

SHELF-LIFE

Unlimited.

WAREHOUSING

Store away from humidity.

CLEANING

Water

TECHNICAL DATA

Mixing ratio:	3 parts powder + 1 part water
Hardness Shore D:	53
Pot-life:	40 min
Colors:	15 colors
Sanding:	30 min
Solid content:	-
Gloss:	-
Thinner:	-
Coverage per coat:	-
Coverage USA per coat:	-
Drying:	Fully dry after 4 hours. [21 °C; 50% HR; 7 mm]

PROTECTION

You can cover the putty with any type of finish (oil, varnish, paint, etc.).

IMPORTANT INFORMATION

it is advisable to use the putty at temperatures above 12 °C.



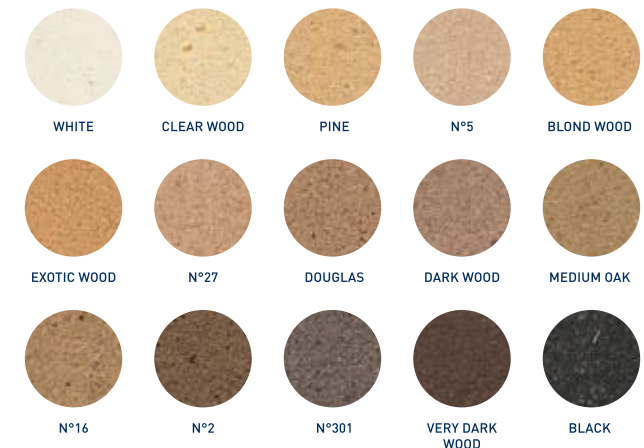
APPLICATION

Preparation substrate:

Make sure before application that the surface is clean and dry. Thorough dusting.

Processing:

- Choose the WOODMASTIC BI color that comes closest to the desired final color.
- Mix 3 doses of powder and 1 dose of water. Knead the putty then leave it for a few minutes. The product, once prepared, can be preserved for 40 minutes.
- Fill up and smooth in one operation repairs up to 20 mm depth. Beyond that, proceed in 2 successive passes.
- When dry, sand lightly to get a perfect finish.



P340 POWDER / Dedicated for engineered parquet

PRODUCT DESCRIPTION

This odorless, 2-component putty is a very environment-friendly compared to other variants of putties. The putty comes in powder and delivers you 30% extra product once mixed with water. This fast-curing product can fill gaps up to 7 mm. The P340 has very good adhesion and hardness properties, and is still easy to sand and will not clog sanding paper. After putty application, the final product is just like wood so can perfectly be sawn, sanded, tinted, waxed, varnished and even nailed. Can be used for both interior and exterior use if well finished.

RANGE OF APPLICATION

Refinishing and finishing of cracks and imperfections. Suitable for all types of wood: parquet, paneling, carpentry, furniture, panels.

PACKAGING

5kg - 20kg

SHELF-LIFE

Unlimited

WAREHOUSING

Store away from humidity.

CLEANING

Water

TECHNICAL DATA

Hardness Shore D:	63
Mixing ratio:	Mix 3 parts of powder for 1 part of water
Pot-life:	24 hours when stored in a hermetically sealed box.
Colors:	17 colors
Sanding:	40 min
Thinner:	-
Coverage per coat:	-
Coverage USA per coat:	-
Drying:	Fully dry after 24 hours [21 °C; 50% HR; 7 mm]

PROTECTION

You can cover the putty with any type of finish (oil, varnish, paint, etc.)

IMPORTANT INFORMATION

- It is advisable to use the putty at temperatures above 12 °C.

APPLICATION

Preparation substrate:

Make sure before application that the surface is clean and dry. Dusting beforehand recommended.

Processing:

- Choose the WOOD MASTIC® P340 color that comes closest to the desired final color.
- Mix 3 parts of powder for 1 part of water.
- Mix well for 5 min.
- Once prepared, the sealant is stored for 24 hours in a hermetically sealed box.
- Up to 7 mm deep, slots and knots can be plugged and smoothed in one operation without shrinkage.
- Beyond proceed in 2 successive passes.
- After drying, the filler should be lightly sanded to obtain a perfect finish.



WHITE



CLEAR WOOD



BLOND WOOD



CLEAR OKOUME



OKOUME



DARK WOOD



EXOTIC WOOD



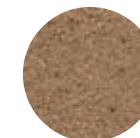
OKOUME MATHE



N°19



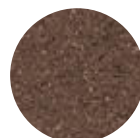
DECO WOOD



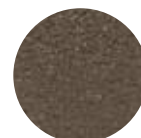
N°20



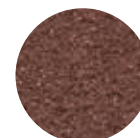
DOUGLAS



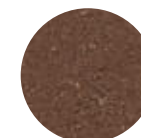
VERY DARK WOOD



N°23



RED WOOD



N°30



BLACK



www.industry.blanchongroup.com

Onledebeekstraat 9 - 8800 Roeselare Beveren | Tel. +32 (0)51 30 11 40 - E-mail: info@ciranova.be



A brand of  **Blanchon**
Group

50, 8^{ème} rue | 69800 Saint-Priest
Tel. +33 472 89 06 06
www.blanchongroup.com